



DS81x8-HC

HOW TO SPEC GUIDE

Version: 1.1
North America





CORDED

Description

SKU

DS8108-HC
2D Area Imager

Healthcare White
Vibration Motor
Can Read off of LCD Displays

DS8108-HC4000BVZWW



CORDED BUNDLE

DS8108-HCBU2104ZVW

Scanner – DS8108-HC (HC White)

USB Cable – CBA-U21-S07ZBR



CORDLESS

	Description	SKU
DS8178-HC 2D Area Imager	Healthcare White Vibration Motor Can Read off of LCD Displays	DS8178-HCMF00BVMWW

CORDLESS CRADLES



	Description	SKU
Standard Cradle	Charger, Bluetooth, FIPS, Healthcare White	CR8178-SC100FBWW



	Description	SKU
Presentation Cradle	Charger, Bluetooth, FIPS, Healthcare White	CR8178-PCM00FBWW

*All cordless models FIPS rated



CORDLESS BUNDLES

DS8178-HCBU210MS5W

Scanner – DS8178-HC (Healthcare White)
Standard Cradle – CR8178-SC100FBWW
USB Cable – CBA-U21-S07ZBR

DS8178-HCBU210MP5W

Scanner – DS8178-HC (Healthcare White)
Presentation Cradle – CR8178-PCM00FBWW
USB Cable – CBA-U21-S07ZBR

DS8178-HCBU210FS5W

Scanner – DS8178-HC (Healthcare White)
Standard Cradle – CR8178-SC100FBWW
USB Cable – CBA-U21-S07ZBR
Adhesive Fasteners included

DS8178-HCBU210FP5W

Scanner – DS8178-HC (Healthcare White)
Presentation Cradle – CR8178-PCM00FBWW
USB Cable – CBA-U21-S07ZBR
Adhesive Fasteners included



USB-A

CBA-U21-S07ZBR

Cable - Shielded USB: Series A Connector, 7ft. (2.1m), Straight

CBA-U30-S15ZBR

Cable - Shielded USB: Series A Connector, 15ft. (2.1m), Straight

CBA-U46-S07ZAR

Cable - Shielded USB: Series A Connector, 7ft. (2.1m), Straight, **BC 1.2**
[Only Compatible with DS8178 Cradles - BC 1.2 Host Spec Support
Only – Faster Charge Time]





USB-A

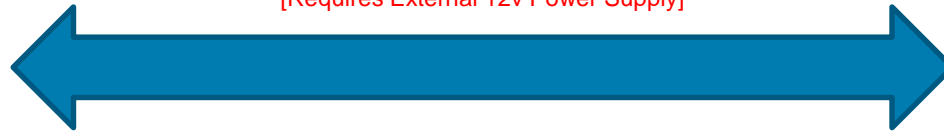
With External Power Supply

[Note: Only compatible with Cordless DS8178 Cradles
– Faster Charge time with 12v Power Supply]



CBA-U42-S07PAR

Cable - Shielded USB: Series A Connector, 7ft. (2.1m), Straight
[Requires External 12v Power Supply]



CBA-U44-S15PAR

Cable - Shielded USB: Series A Connector, 15ft. (4.6m), Straight
[Requires External 12v Power Supply]



+



+



+



PWR-BGA12V50W0WW
Power Supply
12v, 4.16A

CBL-DC-375A1-01
DC Line Cord

23844-00-00R
AC Line Cord



USB-POWER PLUS

[Note: Only compatible with Cordless DS8178 Cradles]



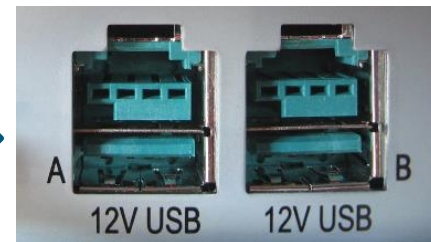
CBA-U23-S07ZBR

Cable - Shielded USB: Power Plus Connector, 7ft. (2.1m), Straight 12v



CBA-U35-S15ZBR

Cable - Shielded USB: Power Plus Connector, 15ft. (4.6m), Straight 12v



[Note: Receptacle used for Power Plus Connection]



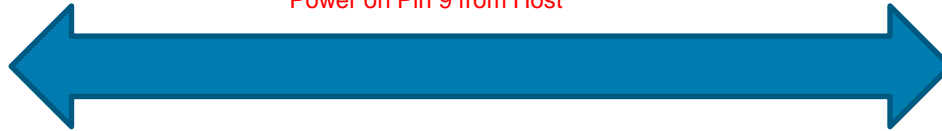
RS232

[Note: Only compatible with Cordless DS8178 Cradles]



CBA-R71-C09ZAR

Cable – RS232: DB9 Female Connector, 9ft (2.8m) Coiled
Power on Pin 9 from Host



[Note: 5v Power must come on Pin 9 from Host]



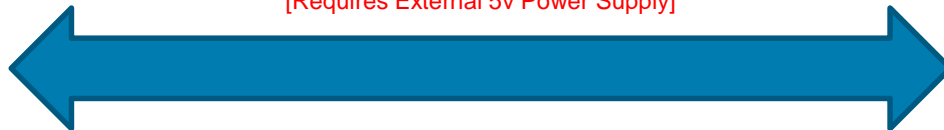
RS232

With External Power Supply



CBA-R01-S07PAR

Cable – RS232: DB9 Female Connector, 7ft. (2m), Straight
[Requires External 5v Power Supply]



+



PWR-WUA5V4W0US

Power Supply
5.2v, 1.1A



RS232

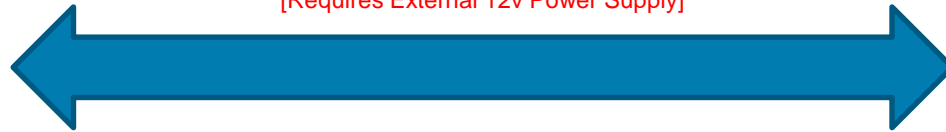
With External Power Supply

[Note: Only compatible with Cordless DS8178 Cradles
– Faster Charge time with 12v Power Supply]



CBA-R07-S07PAR

Cable – RS232: DB9 Female Connector, 7ft. (2m), Straight
[Requires External 12v Power Supply]



CBA-R21-S15PAR

Cable – RS232: DB9 Female Connector, 15ft. (4.6m), Straight
[Requires External 12v Power Supply]



PWR-BGA12V50W0WW
Power Supply
12v, 4.16A

CBL-DC-375A1-01
DC Line Cord

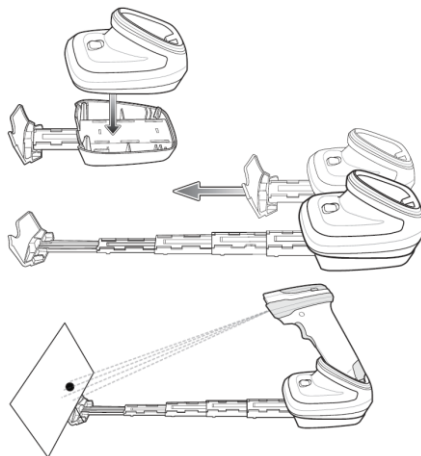
23844-00-00R
AC Line Cord



FIX MOUNT AND ACCESSORIES



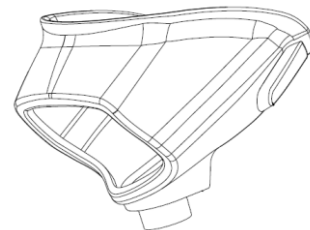
20-71043-0BR
Gooseneck Intellistand
(Healthcare White)
Not compatible with DS8178



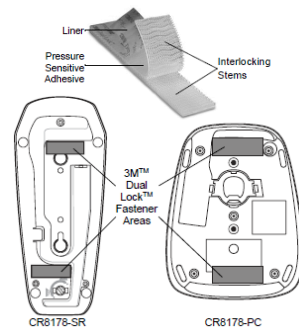
STND-DC0081W-04
Document Capture Stand for
DS8178 in Presentation Mode
(Black)



BTRY-DS81EAB0E-00
Spare Battery for DS8178



21-71043-0BR
Cup Holder
(Healthcare White)



FAST-PC0081W-Q1
1 Set of Four Adhesive Strips

FAST-PC0081W-25
25 Sets of Four Adhesive Strips